



## IMRRA's September 2020- Dry Cargo Newsletter

This month's new Dry cargo newsletter includes:

- **Vessels Risk Rating above and below fleet average**
- **Vessel Age & Deadweight for vessels offered for Charter**
- **Two-year risk Dry Cargo vessel risk trend tables – exclusive to marinerating.com**

---

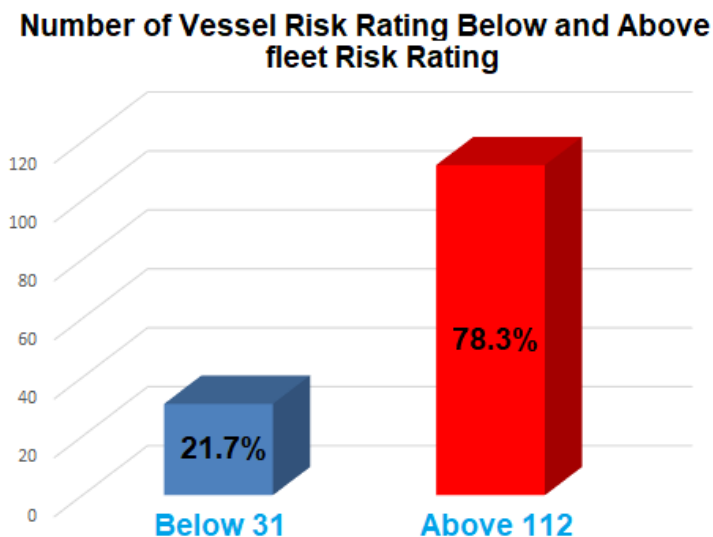
Dear Reader,

During August 2020, 143 Dry Cargo vessels, totalling 5,615,697 DWT, were assessed and risk rated by IMRRA's expert analysts. IMRRA identified 112 vessels as operating with the risk upper than average risk rating on the website. The highest individual risk vessel analyzed was 24% over the fleet average risk rating of 58%.

### 1. Vessels Risk Rating above and below fleet average

Number of Vessels Risk Rating above and below fleet average				
Month	>34%	<34	Min %	Max %
August	112	31	28	58

#### 1.1

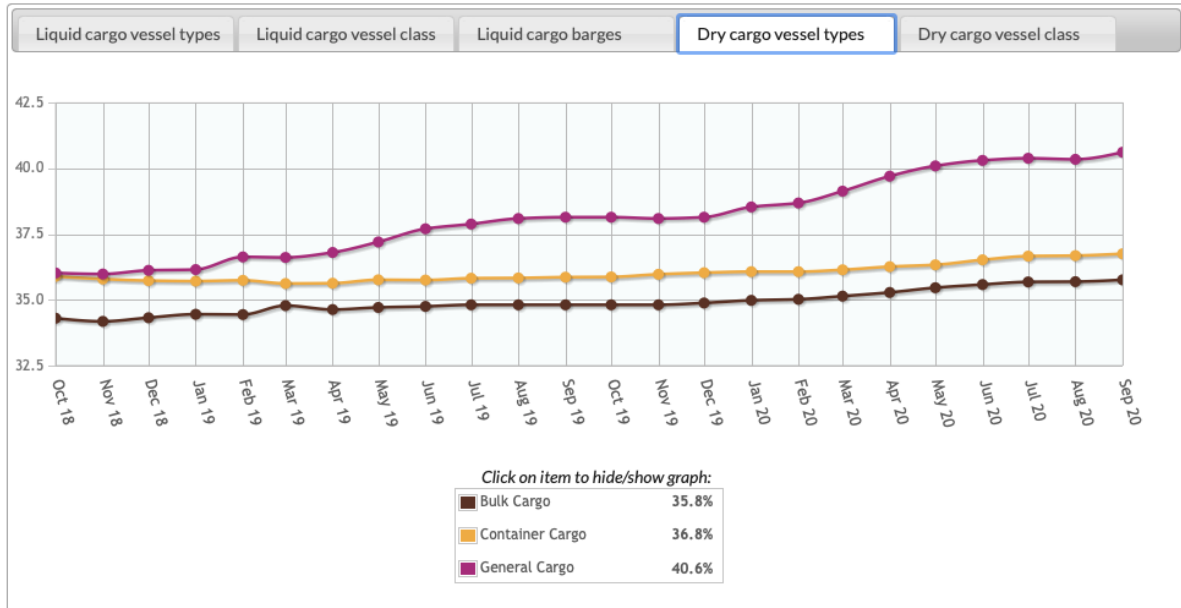




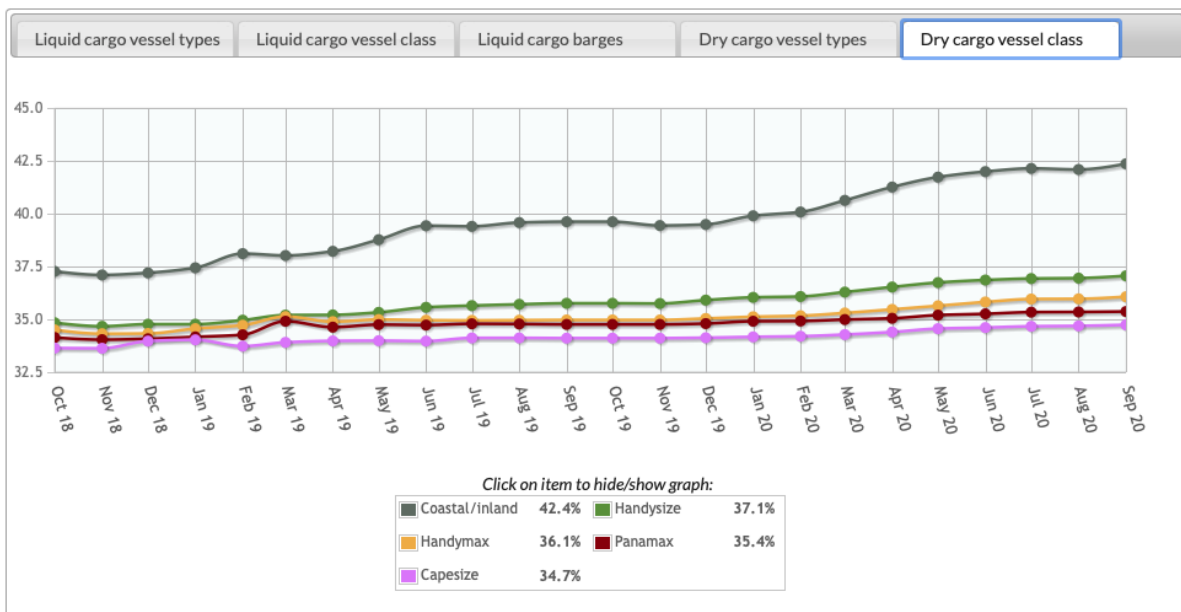
## 2. Dry Cargo Vessels Two-year Risk Trends Table

Dry Cargo vessels generally have a higher risk rating than Liquid Cargo vessels risk rated by IMRRA.

Bulk Cargo vessels have the highest risk, climbing higher and quicker than other vessel types during Covid-19 Pandemic.



## 3. Capesize, Coastal/inland, Handymax, Handysize and Panamax Vessels - Two-year Risk Rating Trends





The key observation to take away is that Coastal/inland vessels are currently the highest risk class of vessels, with the average overall rising 2.3% over the past six-months.

For more details on how IMRRA's risk ratings are derived visit IMRRA's Vessel Risk Assessment Methodology by clicking [here](#).

To access the Risk Rating Trends data and discover the precise risk rating for every vessel type, sign-up for a 12-months free trial [here](#).

#### 4. Chartering: Vessel Age and Deadweight table for vessels risk rated and offered for charter during August 2020.

Vessel Age	DWT					
	<5000	5000-20000	20000-50000	50000-150000	>150000	Total
≥ 25 yrs	2	2	1	0	0	5
20-25 yrs	0	4	0	0	0	4
15-20 yrs	3	4	4	4	0	15
10-15 yrs*	14	11	14	13	0	52*
5-10 yrs	2	10	12	24	0	48
≤ 5 yrs	0	2	2	15	0	19
<b>Total</b>	<b>21</b>	<b>33</b>	<b>33</b>	<b>56</b>	<b>0</b>	<b>143</b>

Vessel's for Trade: \*Overall 50,000 to 150,000 DWT, aged 10-15 years were the most commonly offered for trading.

With technical vessel inspections on the decrease due to the pandemic, and safety documentation approaching the end of its safety limits, Dry Cargo vessel risk is consistently rising.

If you have any questions regarding the above data, please do not hesitate to get in contact with me.

Regards.

Wayne Hurley  
Head of Business Development

e: [Wayne.Hurley@marinerating.com](mailto:Wayne.Hurley@marinerating.com)

d: +44(0) 20 7900 2841

m: +44(0) 7824 367535

[www.marinerating.com](http://www.marinerating.com)

P.S. 12-month free trials of [marinerating.com](http://marinerating.com) available [here](#).